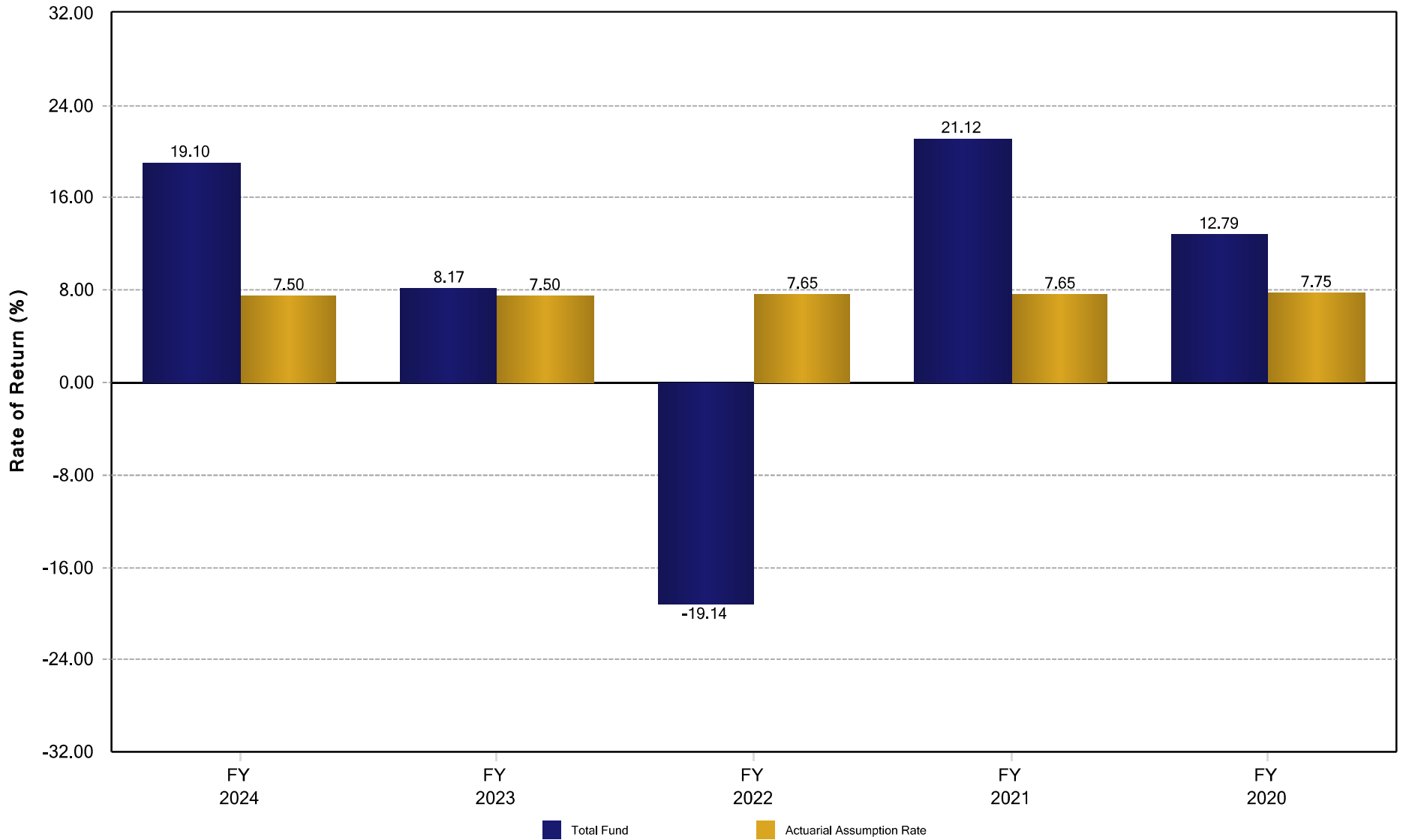


Palm Bay Police & Firefighters' Pension Fund  
Fiscal Year Rates of Return  
September 30, 2024



*Disclosure: Actuarial assumption rate as of September 30, 2024. Past performance is not indicative of future results.*



# Palm Bay Police & Firefighters' Pension Fund Historical Asset Allocation September 30, 2024

